



AZIMUTH TRACTOR DRIVE TUG 2412 TWIN FIN

"CAPE LEEUWIN"

GENERAL

Yard number	545018
Delivery date	March 2017
Basic functions	Towing, mooring and fire-fighting operations
Classification	Lloyd's Register * 100 A1 Tug [*] LMC UMS IWS
Flag	Australia
Owner	Mackenzie Marine & Towage Pty Ltd

DIMENSIONS

Length overall	24.74 m
Beam overall	12.63 m
Depth at sides	4.60 m
Displacement	503 t

TANK CAPACITIES

Fuel oil	69.5 m ³
Fresh water	8.0 m ³
Lubrication oil	6.9 m ³
Bilge water	5.9 m ³
Foam	5.5 m ³
Dirty oil	3.0 m ³
Sewage	3.4 m ³

PERFORMANCES

Bollard pull	70.4 t
Speed ahead	12.5 kn
Speed astern	12.7 kn

PROPULSION SYSTEM

Main engines	2x Caterpillar 3516C TA HD+/D
Total power	4200 bkW (5632 bhp) at 1600 rpm
Azimuth thrusters	Rolls Royce US 255 FP
Slipping clutches	Rolls Royce 'built in' type
Propeller diameter	2600 mm
Forced ventilation	60.000 m ³ /h

AUXILIARY EQUIPMENT

Generator sets	2x Caterpillar C4.4 TA, 230/400 V, 86 kVA, 50 Hz
Bilge/general service pumps	2x Sterling AKHA 5101, 20 m ³ /h
Fuel oil pumps	2x Sterling R35/40, 3.4 m ³ /h
Fuel oil filters	2x Coalester filters incl. water separator
Sewage pump	Libellula L1-3H, 6.6 m ³ /h
Cooling system	Box cooling + anti-growth system
Hydraulic system	Double main engine driven pumps
Fifi set	Diesel driven pump 600 m ³ /h
Fifi monitor	1x 600 m ³ /h, water/foam

DECK LAY-OUT

Anchors	2x 360 kg Pool (High Holding Power)
Anchor winch	Electrically driven 10 m/min incl. warping head
Towing winch aft	Hydraulically driven split drum 33 ton at 11 m/min, slack rope speed up to 51 m/min, 150 ton brake
Fendering	Cylinder + block stern fender, D-fender side/fore and tyre fendering

ACCOMMODATION

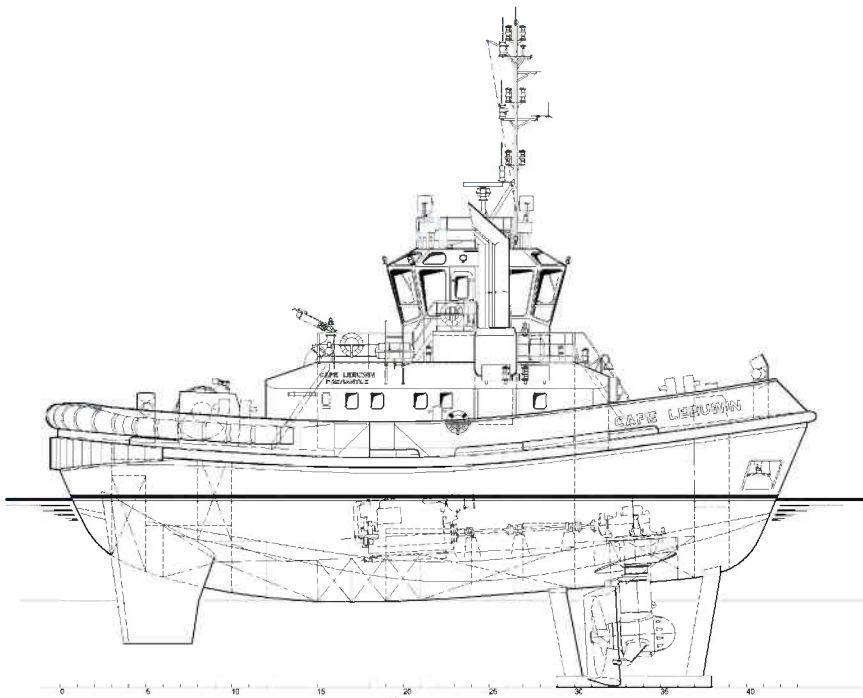
For 4 persons, completely insulated and finished with durable modern linings, acoustical ceiling in the wheelhouse, floating floors and air-conditioning. Accommodation above main deck with a captain's cabin, chief engineer's cabin, one double crew cabin, galley, mess/dayroom and sanitary facilities.

NAUTICAL AND COMMUNICATION EQUIPMENT

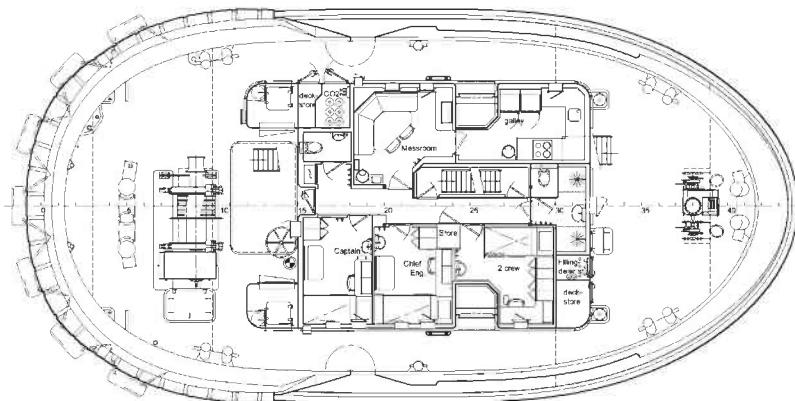
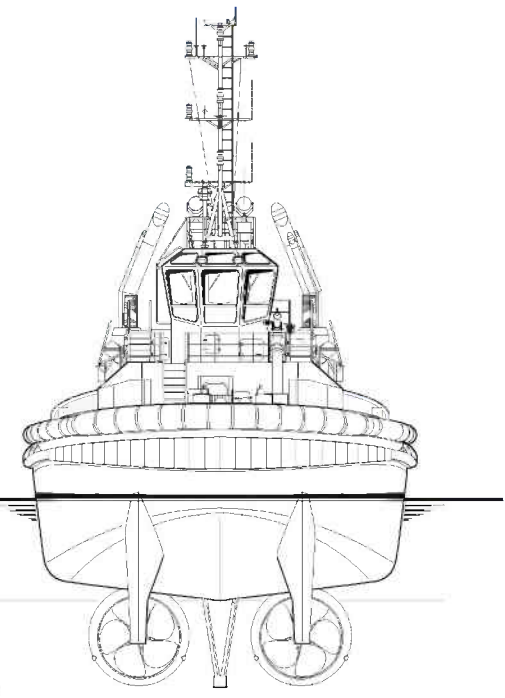
Searchlights	2x Pesch 1000 W
Radar system	Furuno FAR 2117
Compass	Magnetic Kotter
Autopilot	Simrad AP-70
GPS	Furuno GP-170
Echo sounder	Furuno LS-6100
VHF radio telephone	2x Sailor Compact 6222, 25 W
VHF hand-held	2x Jotron TRON TR-20, GMDSS approved
Inmarsat	Furuno Felcom 18
AIS	Furuno FA-150
Navtex	Furuno NX-700A
EPIRB	Jotron Tron-60S
Sart	Jotron Tron Sart 20

AZIMUTH TRACTOR DRIVE TUG 2412 TWIN FIN

“CAPE LEEUWIN”

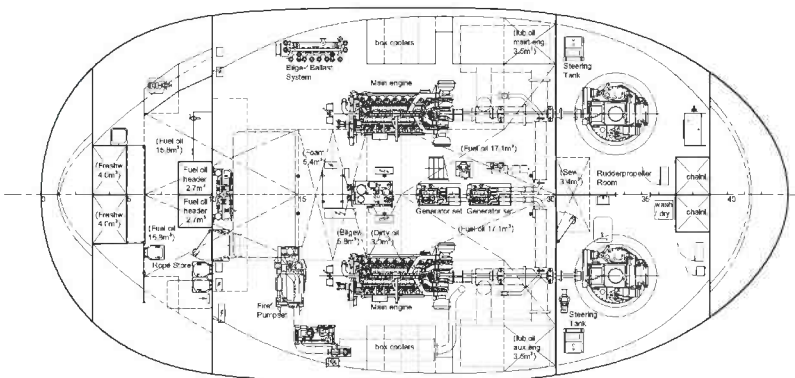
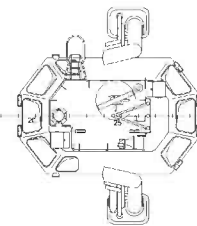


Main deck

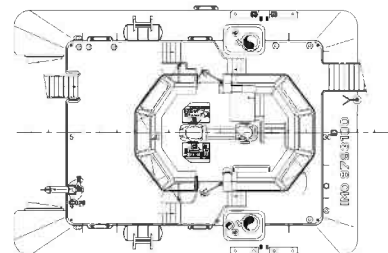


Below Main deck

Top deck



Bridge deck



DAMEN

DAMEN SHIPYARDS GROUP

Avelingen-West 20
4202 MS Gorinchem
The Netherlands

P.O. Box 1
4200 AA Gorinchem
The Netherlands

phone +31 (0)183 63 99 22
fax +31 (0)183 63 21 89

info@damen.com
www.damen.com

© No part of the leaflet may be reproduced in any form, by print, photo print, microfilm, or any other means, without written permission from Damen Shipyards Group