



AZIMUTH TRACTOR DRIVE TUG 2412 TWIN FIN

“SVITZER EUREKA”

GENERAL

Yard number	545016
Delivery date	January 2017
Basic functions	Towing, mooring and fire-fighting operations
Classification	Lloyd's register * 100 A1 Tug Fire Fighting Ship 1 (2400 m ³ /h) with water spray [*] LMC UMS IWS
Flag	Australia
Owner	Svitzer

DIMENSIONS

Length overall	24.74 m
Beam overall	12.63 m
Depth at sides	4.60 m
Draught	5.80 m
Displacement	528 t

TANK CAPACITIES

Fuel oil	69.5 m ³
Fresh water	8.0 m ³
Lubrication oil	6.9 m ³
Bilge water	3.0 m ³
Foam	11.3 m ³
Dirty oil	3.0 m ³
Sewage	3.4 m ³
Hydraulic oil tank thrusters	0.4 m ³
Void space aft peak	17.5 m ³
Void space fore peak	34.8 m ³

PERFORMANCES

Bollard pull	70.7 t
Speed ahead	12.9 kn
Speed astern	12.7 kn

PROPULSION SYSTEM

Main engines	2x Caterpillar 3516C TA HD+/D
Total power	4200 bkW (5632 bhp) at 1600 rpm
Azimuth thrusters	Rolls Royce US 255 FP
Slipping clutches	Rolls Royce 'built in' type
Propeller diameter	2600 mm
Forced ventilation	60.000 m ³ /h

AUXILIARY EQUIPMENT

Generator sets	2x Caterpillar C4.4 TA, 230/400 V, 86 kVA, 50 Hz
Bilge/general service pumps	2x Sterling AKHA 5101, 20 m ³ /h
Fuel oil pump	2x Sterling R35/40, 3.4 m ³ /h
Fuel oil filters	2x Coalester filters incl. water separator
Hydraulic oil filtration system thruster	CJC, 2x PTU2 27/27 PV – DE2H1PW
Fuel oil filtration units	CJC, 2x PTU3 27/81 MZ – EZ PWZ
Lube oil filtration system main engine	CJC, HDU 427 / 81 P
Hydraulic oil filtration system winch	CJC, HDU 15/25 PV-P(30-4, BG, 400/50)
Sewage pump	Libellula 1-3H, 6.6 m ³ /h
Cooling system	Box cooling + anti-growth system
Hydraulic system	Double main engine driven pumps
Fifi set	Diesel driven pump 2700 m ³ /h (FIFI 1)
Fifi monitors	2x 1200 m ³ /h water/foam

DECK LAY-OUT

Anchor	2x 360 kg Pool (High Holding Power)
Anchor winch	Electrically driven 10 m/min incl. vertical warping head
Towing winch aft	Hydraulically driven split drum 33 ton pull at 11 m/min, slack rope speed up to 51 m/min, 150 ton brake
Towing hook aft	SWL 650 kN
Fendering	Cylinder + block stern fender, D-fender side/fore

ACCOMMODATION

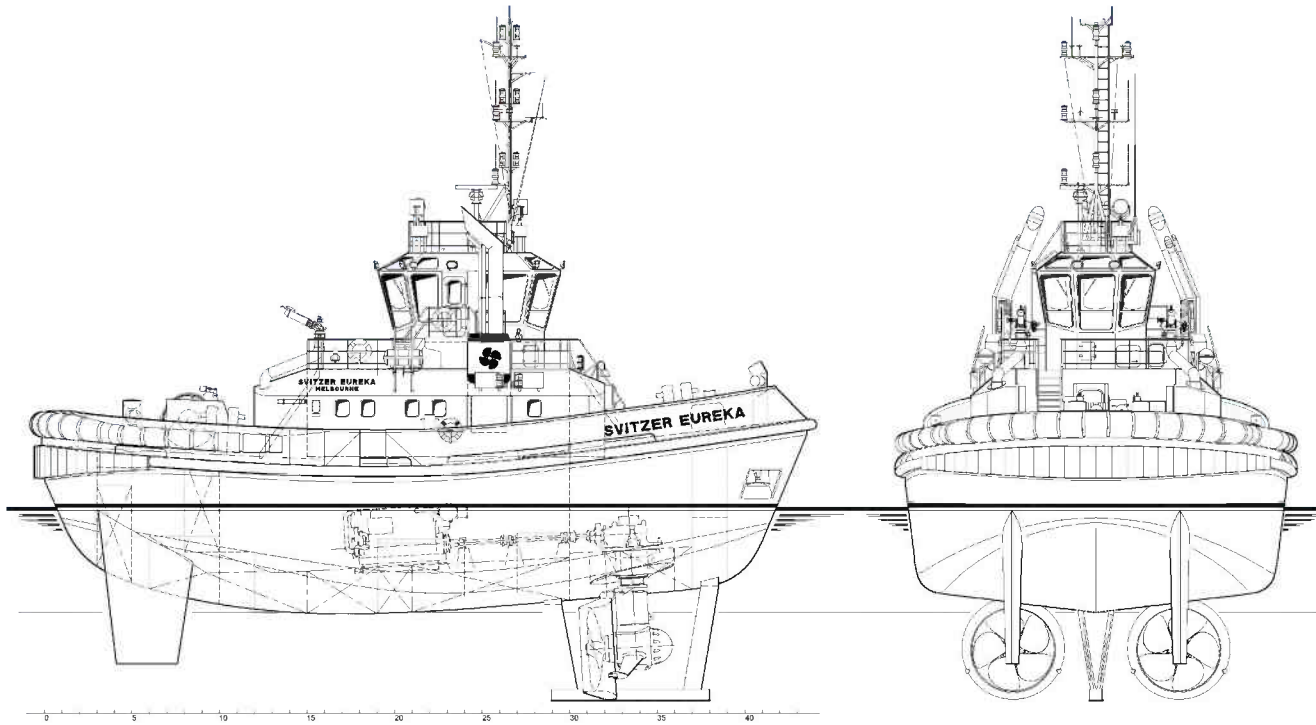
For 4 persons, completely insulated and finished with durable modern linings, acoustical ceiling in the wheelhouse and composite floating floors. Air-conditioned wheelhouse and accommodation. Accommodation above main deck with captain's cabin, chief engineer's cabin, one double crew cabin, galley, mess/dayroom and sanitary facilities.

NAUTICAL AND COMMUNICATION EQUIPMENT

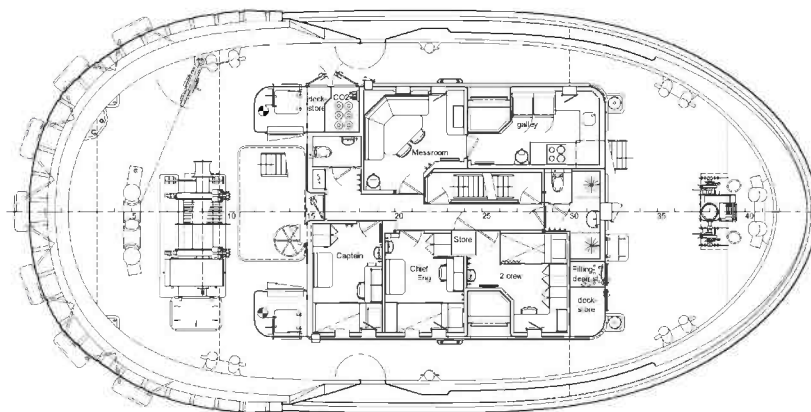
Searchlight	2x Xenon 450 W
Radar system	Furuno FAR 2117
Compass	Magnetic Kotter
Autopilot	Simrad AP-70
GPS	Furuno GP-170
Echosounder	Furuno FE-800
VHF radio telephone	2x Sailor Compact 6222, 25 W
VHF hand-held	2x Jotron Tron TR-20, GMDSS approved
SSB	Furuno FS-1575
Inmarsat	Furuno Felcom 18
AIS	Furuno FA-150
EPIRB	Jotron Tron-40S
Sart	Jotron Tron Sart20
Anemometer	Windsonic OMC 115

AZIMUTH TRACTOR DRIVE TUG 2412 TWIN FIN

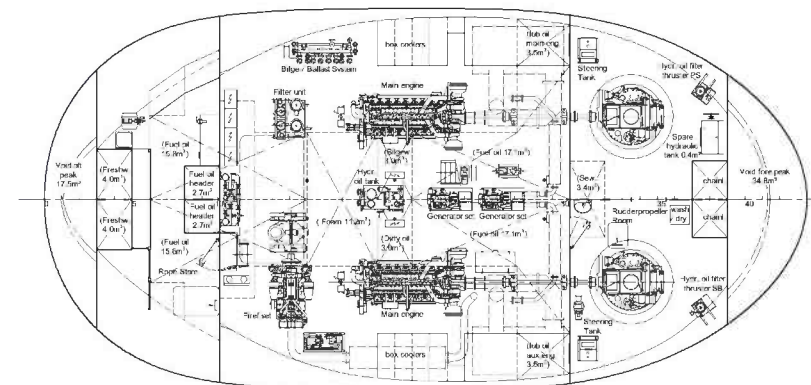
“SVITZER EUREKA”



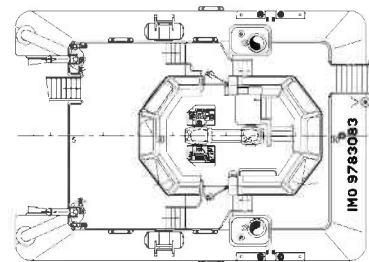
Main deck



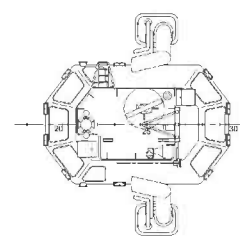
Below Main deck



Bridge deck



Top deck



DAMEN

DAMEN SHIPYARDS GROUP

Avelingen-West 20
4202 MS Gorinchem
The Netherlands

P.O. Box 1
4200 AA Gorinchem
The Netherlands

phone +31 (0)183 63 99 22
fax +31 (0)183 63 21 89

info@damen.com
www.damen.com

© No part of the leaflet may be reproduced in any form, by print, photo print, microfilm, or any other means, without written permission from Damen Shipyards Group