



AZIMUTH STERN DRIVE TUG 2913

"ROTTERDAM"

GENERAL

Yard number	513113
Delivery date	August 2017
Basic functions	Push-pull, towing and mooring operations
Classification	Bureau Veritas I * HULL • MACH Escort Tug Unrestricted Navigation AUT UMS INWATERSURVEY
Flag	Malta
Owner	Kotug Smit Towage

DIMENSIONS

Length overall	29.10 m
Beam overall	13.23 m
Depth at sides	5.35 m
Draught aft	5.40 m
Displacement (98% consumables)	652 t

TANK CAPACITIES

Fuel oil	96.4 m ³
Fresh water	17.3 m ³
Sewage	5.3 m ³
Lubrication oil	4.5 m ³
Dirty oil	2.8 m ³
Sludge	2.4 m ³
Bilge water	5.2 m ³
Hydraulic oil	0.36 m ³

PERFORMANCES

Bollard pull ahead	84.5 t
Bollard pull astern	76.9 t
Speed ahead	13.6 kn
Speed astern	13.3 kn

PROPULSION SYSTEM

Main engines	2x Caterpillar 3516C HD+ TA/D
Total power	5050 bkW (6772 bhp) at 1800 rpm
Thrusters	2x Rolls Royce US 255 FP
Slipping clutches	Rolls Royce 'built in' type
Propeller	2800 mm
Forced ventilation	40.000 m ³ /h

AUXILIARY EQUIPMENT

Generator sets	2x Caterpillar C7.1 TA, 230/400 V, 125 kVA, 50 Hz
General service pumps	2x Sterling AKHA 6101 34 m ³ /h each
Fuel pumps	Sterling AKHA 5101 and AOHA 3101
Fuel oil purifier	Westfalia OTC 3-02-137, 1740 l/h
Cooling system	Box cooling + anti-growth system
Fresh water pressure set	Sterling HBK 111 / AOHA 3101
Hydraulic system	Double main engine driven pumps
Sewage treatment plant	Tecnicomar Ecomar 20

DECK LAY-OUT

Anchor	2x 427.5 kg Pool (High Holding Power)
Anchor/towing winch	Hydraulically driven two speed winch with double drum and warping head, pull 38 ton at 12 m/min, slack rope speed 38 m/min, 200 ton brake
Fendering	D-fender at sides, cylinder fender at transom corners, D-fender at stern, cylinder bow fender and W-block fender with waterspray

ACCOMMODATION

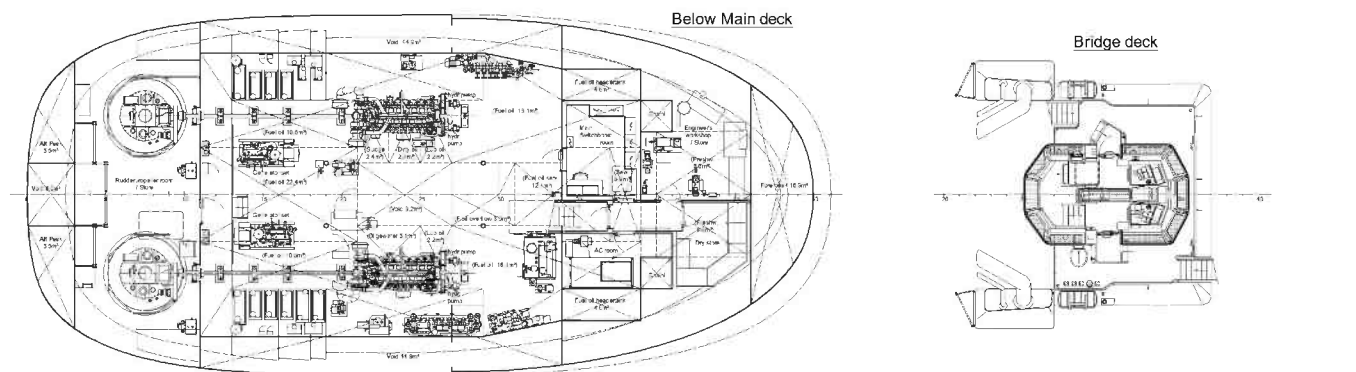
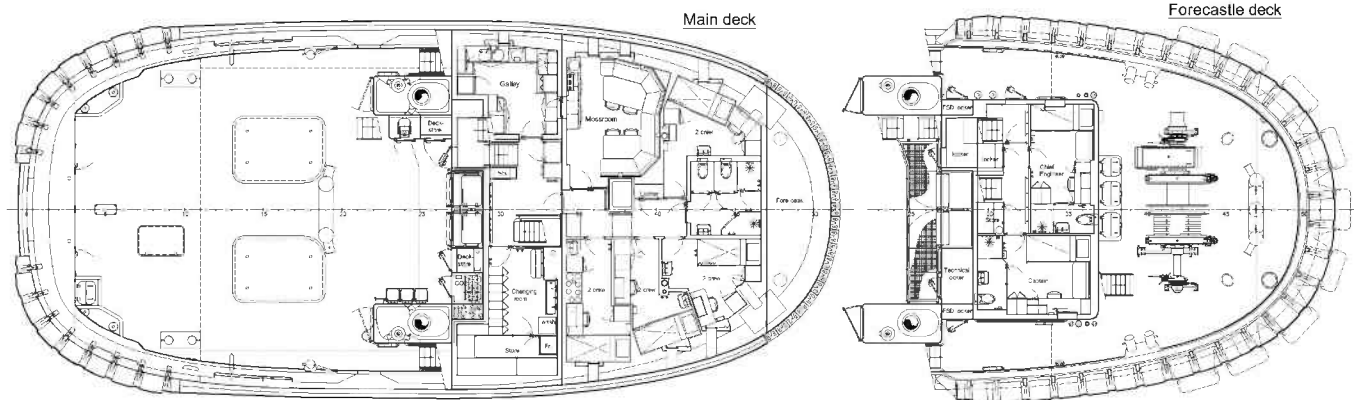
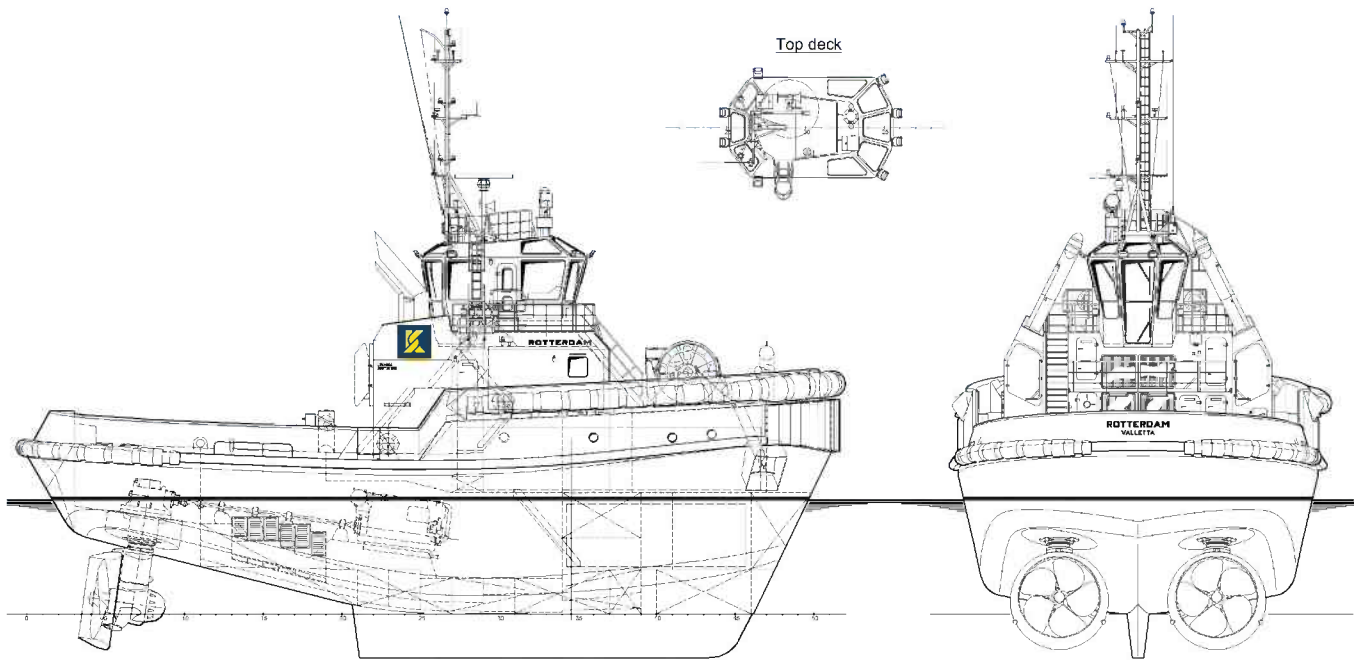
For 10 persons, insulated and finished with durable modern linings, acoustical ceiling in the wheelhouse, floating floors and air-conditioned. With 6 cabins, galley, mess/dayroom, switchboard room, dry store, changing room, store, engineer's workshop and sanitary facilities.

NAUTICAL AND COMMUNICATION EQUIPMENT

Searchlights	2x Norselight 2000 W
Radar system	Furuno FAR-2117 with 19" LCD screen
Speedlog	Furuno DS-80
Compass	Cassens & Plath, type Kotter
Autopilot	Simrad AP-70
GPS	Furuno GP-170
Echosounder	Furuno FE-800
VHF	2x Sailor Compact 6222, 25 W
VHF hand-held	2x Jotron Tron TR-20
LRIT	Furuno Felcom 19
SSB	Furuno FS-1575
Navtex	Furuno NX-700A
AIS	Furuno FA-150
EPIRB	Jotron Tron-60S
Sart	Jotron Tronsart20

AZIMUTH STERN DRIVE TUG 2913

"ROTTERDAM"



DAMEN

DAMEN SHIPYARDS GROUP

Avelingen-West 20
4202 MS Gorinchem
The Netherlands

P.O. Box 1
4200 AA Gorinchem
The Netherlands

phone +31 (0)183 63 99 22
fax +31 (0)183 63 21 89

info@damen.com
www.damen.com

© No part of the leaflet may be reproduced in any form, by print, photo print, microfilm, or any other means, without written permission from Damen Shipyards Group